

SAP Business ByDesign™

A Complete Software Package for Light Retail

To Manage Your Company More Efficiently and Compete More Effectively

Run Your Light Retail Business on **SAP® Cloud ERP**
From As Little As **R101.02** Per Employee Per Day*

The SAP® Business ByDesign Light Retail package covers the following areas:

- ✓ Point of Sales (POS) Transactions
- ✓ Sourcing and Purchasing
- ✓ Supply Chain Planning and Control
- ✓ Inventory Management
- ✓ Cash Flow Management
- ✓ Financial (AP, AR, GL, Taxes, banks) and Management Accounting
- ✓ Travel and Expenses
- ✓ Personnel Management
- ✓ Communication and Infrastructure Exchange



What Is SAP® Business ByDesign?

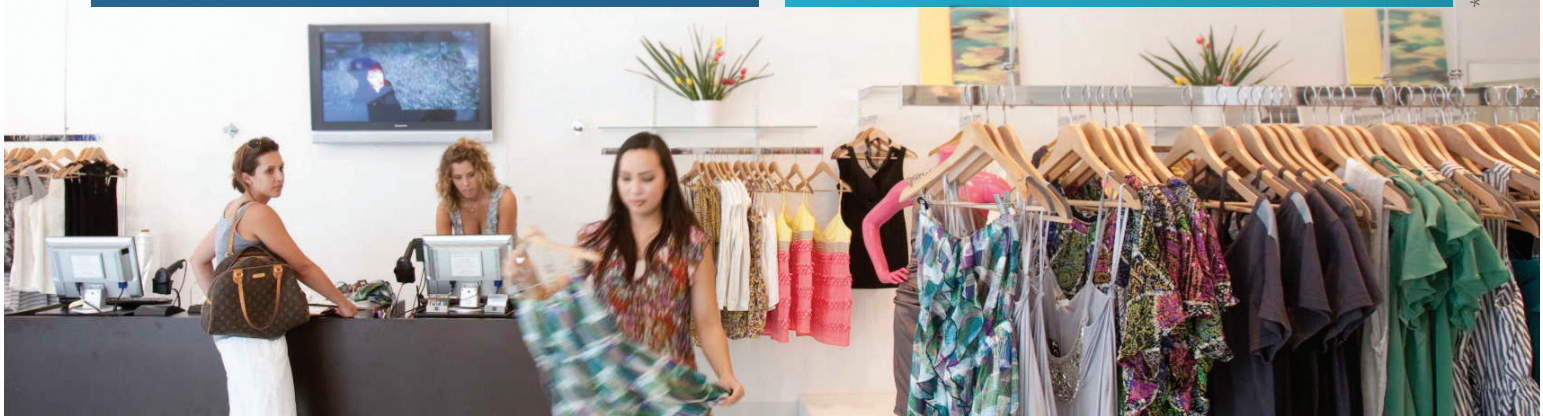
SAP® Business ByDesign is a complete Cloud-based ERP business solution for medium sized business and subsidiaries of large enterprises.



Did You Know?

Companies that run SAP® Business ByDesign through Seidor Westrocon have 0% CAPEX investments.

*Terms and Conditions apply





Let's Talk About Your Business

You are a growing business, and you need to implement a low cost unified, agile and efficient ERP without the high cost of an ERP. You need to consider the SAP® Business ByDesign™ starter package for Light Retail. This solution provides you with the functionality and integration of large-scale ERP solutions without the cost and complexity traditionally associated with large ERP implementations.

Our SAP® Business ByDesign™ Light Retail solution offers all the main features required to run your business, from Customer Relationship Management, Finances and Accounts, Point of Sales, Human Resources, and Procurement. It helps you manage all your retail process in an integrated centralised solution.



"It does everything we need it to do and more."
- By Rob Sinton, TasteTech.



You will be able to unify the information across your departments seamlessly on one application with one core interface. At the same time, you will benefit from all the functions associated with a large ERP implementation at a fraction of the cost. Your information will be maintained on the cloud which will make it easier to access, more secure and cheaper to maintain. SAP® Business ByDesign™ has preconfigured best practice business processes designed to support your business needs. SAP® Business ByDesign™ is also built on the advanced technical backbone of the SAP® ERP technology and it uses the same advanced analytics engine giving all the integrated reporting functionality that you require.

SAP® Business ByDesign™ is designed for growing business, it offers you stability, security, best of breed solutions and preconfigured retail business processes all hosted in the cloud that will reduce your maintenance and implementation costs. Seidor Westrocon is a Platinum Level SAP® partner and together we will assist you in every way to ensure that you implement the best fitting technical solution in your organisation.

Benefits Of Using A Cloud Instance

SAP® Business ByDesign™ allows you to have access a cloud instance built and configured to your specifications. It is a complete ERP solution hosted remotely which you can access 24/7/365. Using a Cloud based solution means that you will not pay for:

- ✓ **Hosting Of The Solution** – no server, infrastructure or running costs.
- ✓ **Support** – you will have a direct line to a global technical team at all times without interruption.
- ✓ **System Maintenance** – system maintenance takes place by SAP® eliminating the need of an onsite maintenance team.
- ✓ **Solution Upgrades** – cloud based solutions upgrades are included in your subscription fee.
- ✓ **Mobile Capability** – all SAP® cloud based applications support mobile applications.
- ✓ **Security** - hosted by SAP®, audited regularly and ISO 27001, ISAE-3402, and SS.

SAP® ByDesign - Key Benefits

Oriented to retail companies who want to gain insights into customer behavior, want to have complete information on the available stock in each store, and centralized manage pricing and promotions, to be able to deliver personalized experience, manage inventory, anticipate demand and more.

- ✓ POS integration or an already integrated SAP® POS
- ✓ Product sourcing cost management
- ✓ Product planning and replenishment
- ✓ Inventory management
- ✓ Supplier contract management
- ✓ Business planning consolidation from various retail locations

Are You Interested?

To find out more about the SAP® Business ByDesign™ starter package for Light Retail, contact Seidor Westrocon today!